



## Our Keynote Speakers

**Susan R. Dolan and Audrey R. Vizzard** are co-authors of the award-winning book *The End-of-Life Advisor: Medical Considerations for a Peaceful, Dignified Death*. Susan, of Park Ridge, IL, is an attorney, registered nurse, former executive director of a national hospice organization, and current health care consultant. Audrey, of Scotts Valley, CA, is a registered nurse, clinical psychologist, former adjunct professor of psychology at Purdue University, and the author of many books and articles. She also served as a hospice volunteer and facilitates an ongoing Good Grief Group for seniors actively dealing with caregiving and loss.

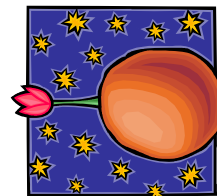
**Bruce Wilson, MD, FACC** is a cardiologist whose essay *Doing Death Better* was published in the October 26, 2009 Milwaukee Journal Sentinel. He is President of Wilson Heart Care Associates in Milwaukee, WI and lectures nationally and internationally on the human stress response and its effect on health and performance. He has served as medical director of a hospice in Milwaukee and written extensively on how the medical system poorly prepares physicians for end-of-life conversations.

- **WHO SHOULD ATTEND?** *Physicians, Nurses, Social Workers, Administrators, CNAs, and others who want to provide the best end-of-life care possible.*
- **LODGING:** *Please make arrangements directly with Olympia Resort and Spa, 800-558-9573. Please mention that you are an End-of-Life Conference attendee.*

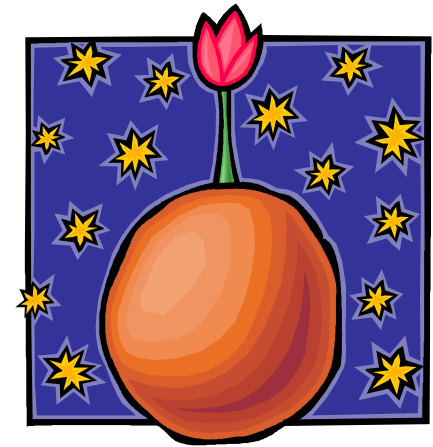
For additional details about any aspect of the conference, visit:  
[www.yourfaithinaction.org/ELC](http://www.yourfaithinaction.org/ELC).

**Faith in Action**  
A Program of Rainbow Hospice Care  
147 W. Rockwell Street  
Jefferson, WI 53549

Non Profit  
Organization  
US Postage  
PAID  
Jefferson, WI  
Permit No. 221



## 7<sup>th</sup> Annual Conference Partnering for Excellence In End-of-Life Care



### *Consider the Conversation*

Thursday, April 7, 2011  
8:00 a.m. – 4:30 p.m.

**Olympia Resort &  
Conference Center**  
1350 Royale Mile Road  
Oconomowoc, Wisconsin  
1-800-558-9573

**Major Sponsors:**  
Rainbow Hospice Care  
Fort HealthCare  
UWHP-Watertown Regional Medical Center

## REGISTRATION

Name \_\_\_\_\_ CE

Name \_\_\_\_\_ CE

Name \_\_\_\_\_ CE

Name \_\_\_\_\_ CE

Organization \_\_\_\_\_

Address \_\_\_\_\_

Phone \_\_\_\_\_

Email \_\_\_\_\_

### Registration Options\*:

\_\_\_\_\_ Full Day: \$90 per individual, or,  
\$75 each for 4 or more attendees \_\_\_\_\_

\_\_\_\_\_ Continuing Education Certificate:  
\$20 per attendee (additional) \_\_\_\_\_

**Total Amount Due: \$ \_\_\_\_\_**

*Fees are nonrefundable after March 30, 2011*

**Make checks payable to Faith in Action**

**Or, pay by Credit Card:**

\_\_\_\_\_  
*Name of card holder (please print)*

\_\_\_\_\_  
*Credit Card number*

Visa: \_\_\_\_\_ MasterCard: \_\_\_\_\_

Expiration Date: \_\_\_\_\_ Security Code: \_\_\_\_\_

Signature \_\_\_\_\_

Send registration and payment to:

**Faith In Action 2011 EOL Conference**  
**c/o Rainbow Hospice Care**  
**147 W. Rockwell Street**  
**Jefferson, WI 53549**

Register On line: [www.yourfaithinaction.org/ELC.htm](http://www.yourfaithinaction.org/ELC.htm)

Register By phone: (920) 674-6255

*Up to six general continuing education contact hours provided.  
Four of those hours of continuing education are available in social work ethics &  
boundaries and will meet Wisconsin's continuing education requirements for social work.*

8:00 – 8:30

### Registration & Breakfast

8:30 – 9:30

**Opening Keynote:** From the Start, Consider the Finish: Planning and Preparing for Excellent End-of-life Care—*Audrey Vizzard & Susan Dolan*

9:45 – 10:45

### Choice of Breakout Sessions

- Continuing the Conversation: How to Engage Patients and Loved Ones in Discussions About End-of-life Care—*Vizzard & Dolan*
- Creating Sacred Space for the Dying—*Loretta Downs*
- Ethics and Boundaries (Part 1)—*Rev. Dale Susan Edmonds*

11:00 – 12:00

### Choice of Breakout Sessions

- Current Choices in an Evolving Political Environment: The Case of Dr. and Mrs. Daniel Gute—*Dr. Bruce Wilson*
- Creating Sacred Space for the Dying—*Loretta Downs*
- Ethics and Boundaries (Part 2)—*Rev. Dale Susan Edmonds*

12:00 – 12:30

### Lunch, Networking and Book Signing

12:30 – 1:30

**Afternoon Keynote:** The Tax of Stress on the Work of Hospice:

An Introduction to Hope—*Dr. Bruce Wilson*

2:00 – 3:00

### Choice of Breakout Sessions

- Current Choices in an Evolving Political Environment: The Case of Dr. and Mrs. Daniel Gute—*Dr. Bruce Wilson*
- Continuing the Conversation: How to Engage Patients and Loved Ones in Discussions About End-of-life Care—*Vizzard & Dolan*
- Ethics and Boundaries (Part 3)—*Rev. Dale Susan Edmonds*

3:15 – 4:15

**Consider the Conversation** (Ethics and Boundaries Part 4)  
a film presentation by—*Terry Kaldhusdal and Mike Bernhagen*

4:15 – 4:30

### Closing Announcements, Evaluations, Certificates of Attendance

For more information, please visit our website at: [www.yourfaithinaction.org](http://www.yourfaithinaction.org).

If you have questions, please email [michelle.smith@rainbowhospicecare.org](mailto:michelle.smith@rainbowhospicecare.org), or call (920) 674-6255